

Opinion Mining & Issue Discovery (OMID)

Problem

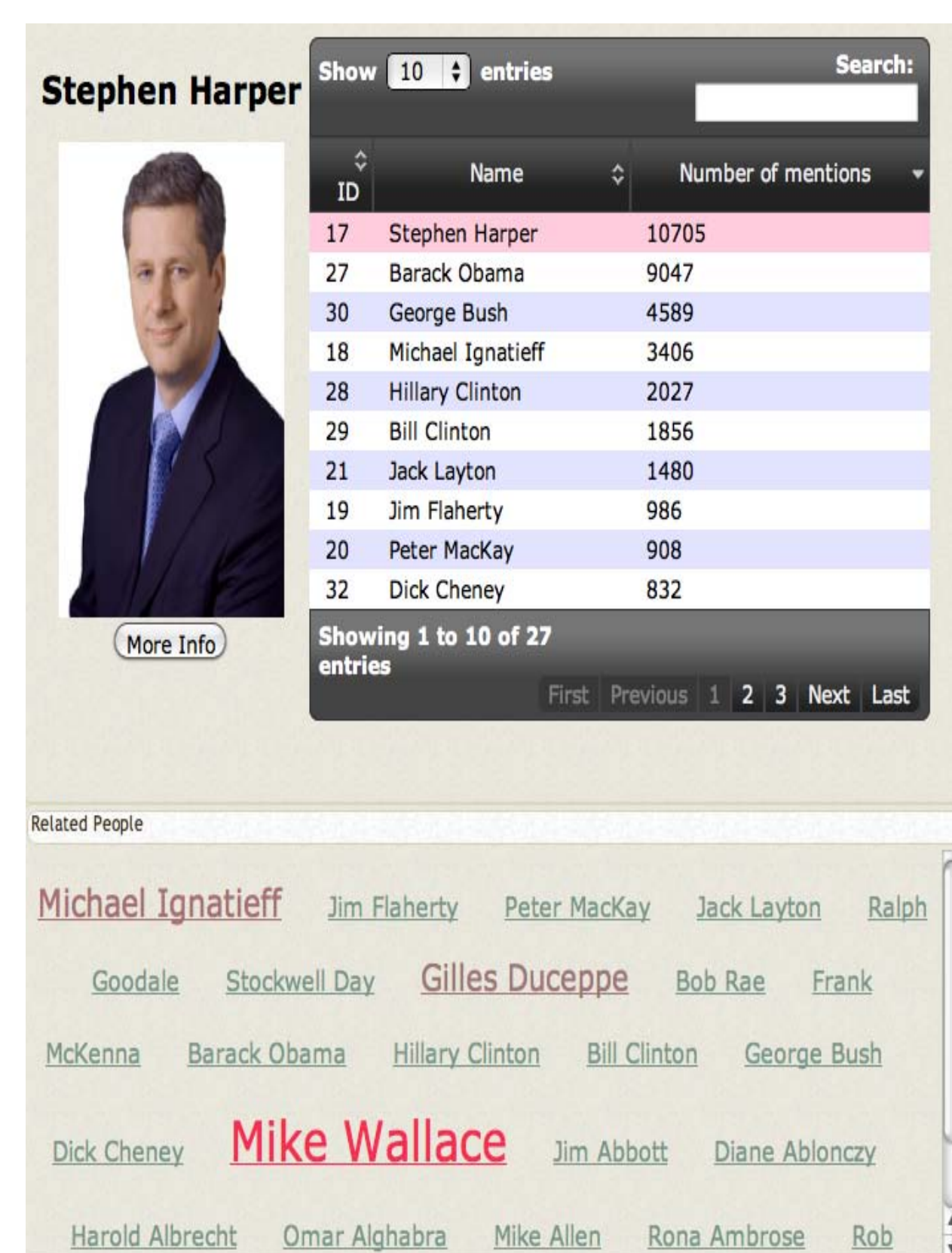
- Discovering new topics & trends within the political field for different time frames.
- Discovering new people of interest within the field.
- Tracking developing topics.
- Monitoring the quality and intensity of the information being processed.

Real World Applications

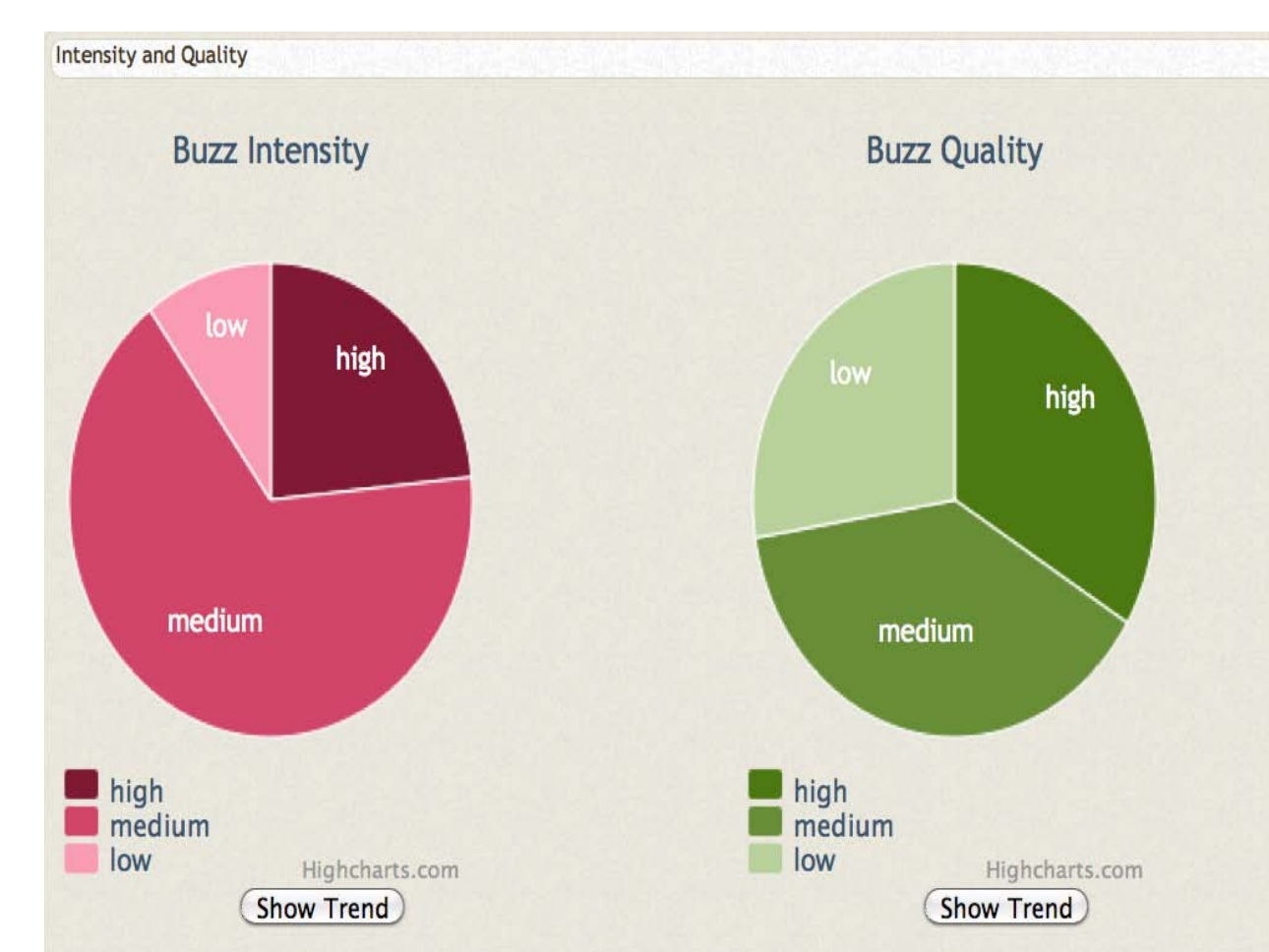
- Monitoring the evolution of topics and issues throughout their lifetime.
- Monitoring of elections and events running up to elections.
- Tracking trends in topics that the OMID system is aware of.
- Discovering of topics or trends in issues that users were unaware were important to their systems.

Person-Person Relations

- Demonstrates the ranks of different politicians
- Demonstrates links between various politicians
- Size and Color are indicators of how linked different politicians are.
- This can be used to discover links between people that are not evident in every day life.
- Uses large amounts of data to create correlations that normal human observation may miss.

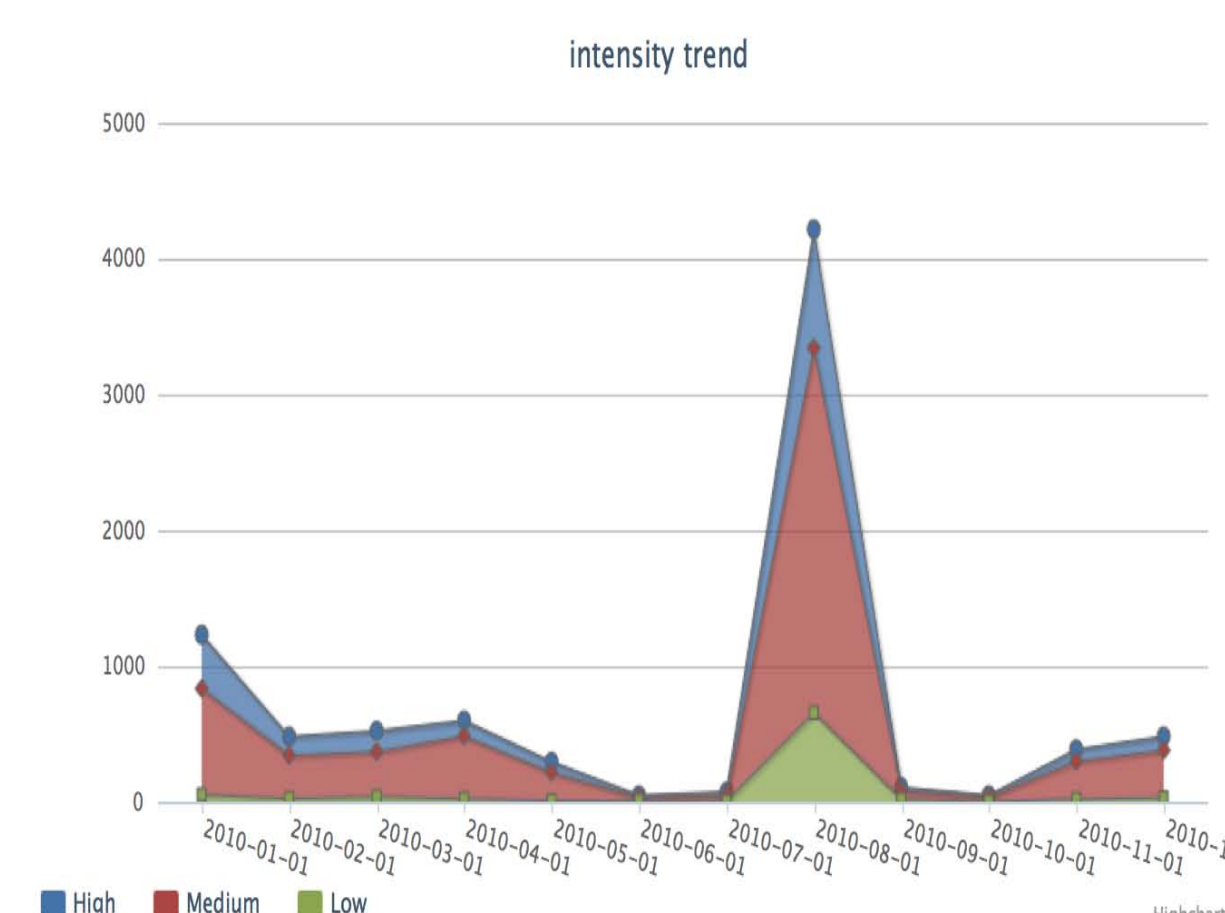


Intensity & Quality



- A fuzzy evaluation of the Intensity and Quality of all the posts within the OMID system.
- Each post is ranked as having one of the following levels of Quality/Intensity:
 - High
 - Medium
 - Low

Trends



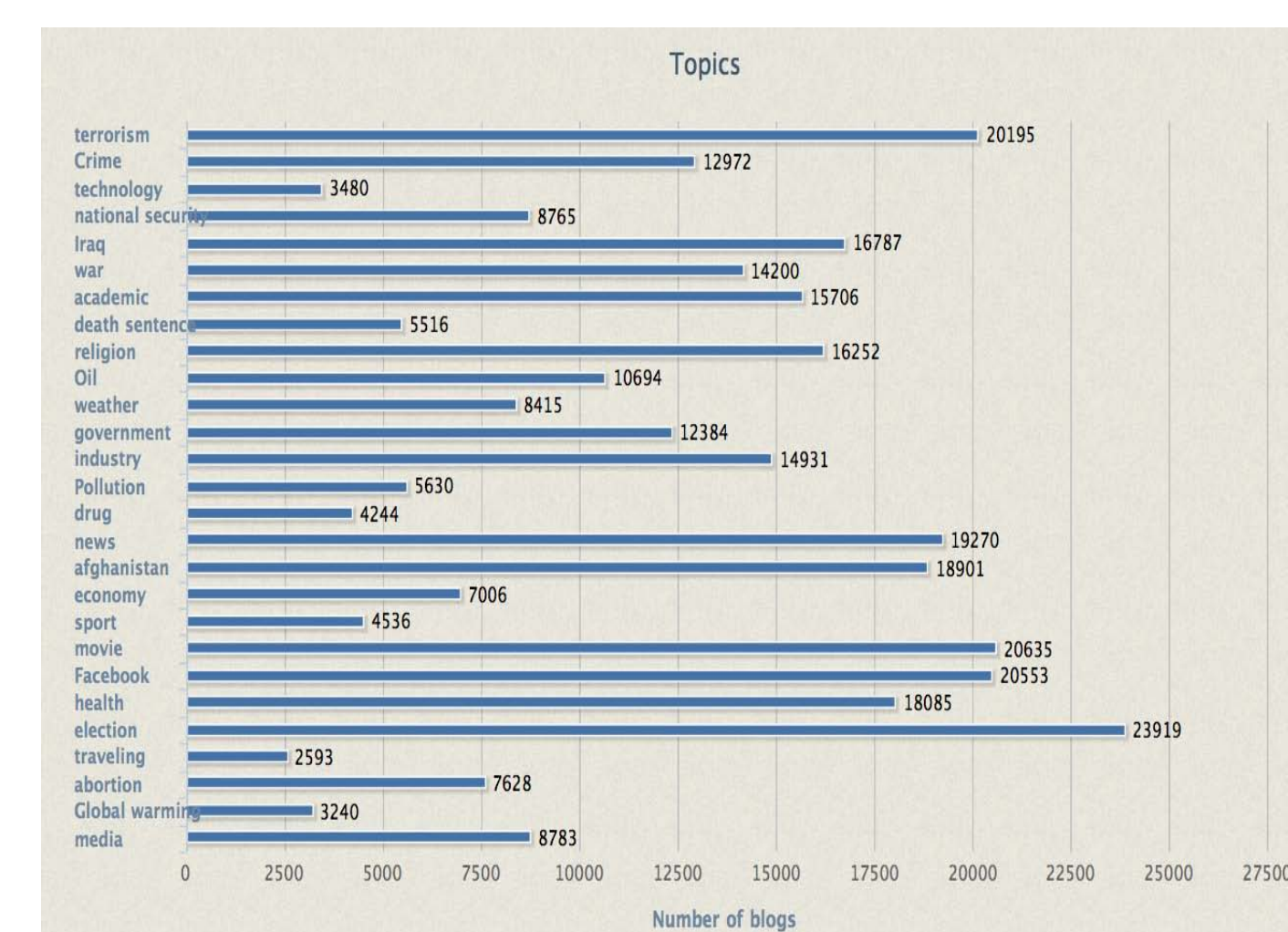
- The OMID system tracks developing trends in both intensity & Quality.
- The trends can be identified for different time frames as chosen by the end user.
- In the near future the OMID system will be able to track trends in topics in the form of the number of posts about said topics.

Person-Topic Relations



- Demonstrates links between various politicians and the topics that they talk about.
- Size and Color are indicators of how often that posts are found to be referring to the politician and that topic.
- This can be used to find links between different politicians and the varying topics that they discuss.

Topic Discovery



- Provides a general overview of all the topics within the OMID system.
- The OMID system is designed to recognize new topics that were not listed before.
- These new topics are added to the list of topics so that they can be tracked as those topics develop.